



# ADAMS COUNTY COLORADO

## Initial DRAFT Scenarios Commissioner District 2020 Census Redistricting

### Scenario C

- Based on 2020 Census Block Group population
- Closely approximates current district shapes
  - Improved city alignment
  - Improved compactness

District	Scenario C Population	Target Population 2020	Difference from Target	Population 2020 (current boundaries)	Population 2010 (current boundaries)
1	103,893	103,914	-21	94,285	88,126
2	104,357	103,914	443	106,312	87,452
3	103,496	103,914	-418	111,074	88,496
4	103,654	103,914	-260	98,784	88,294
5	104,172	103,914	258	109,117	89,235

#### Cities

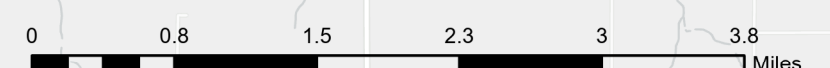
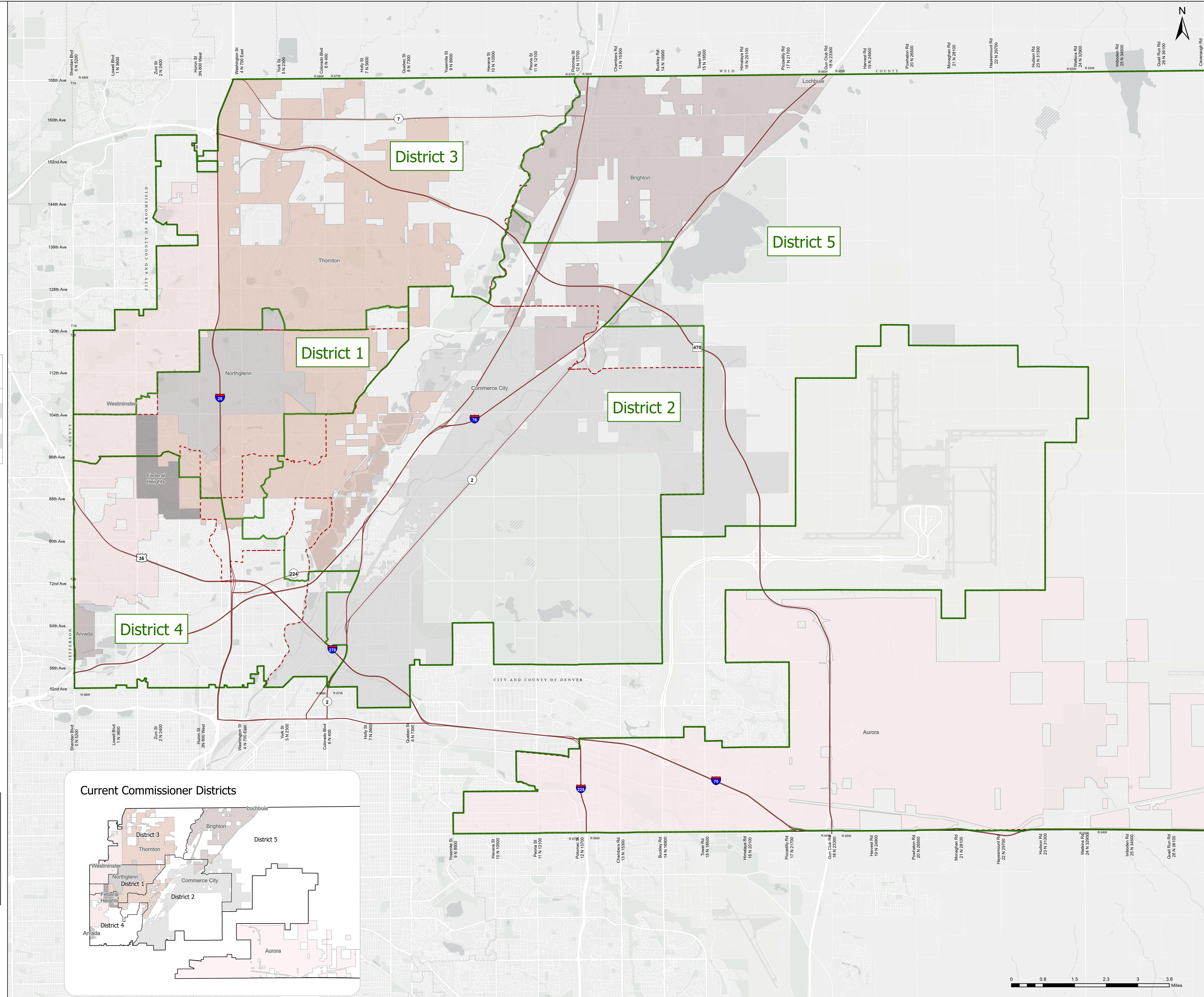
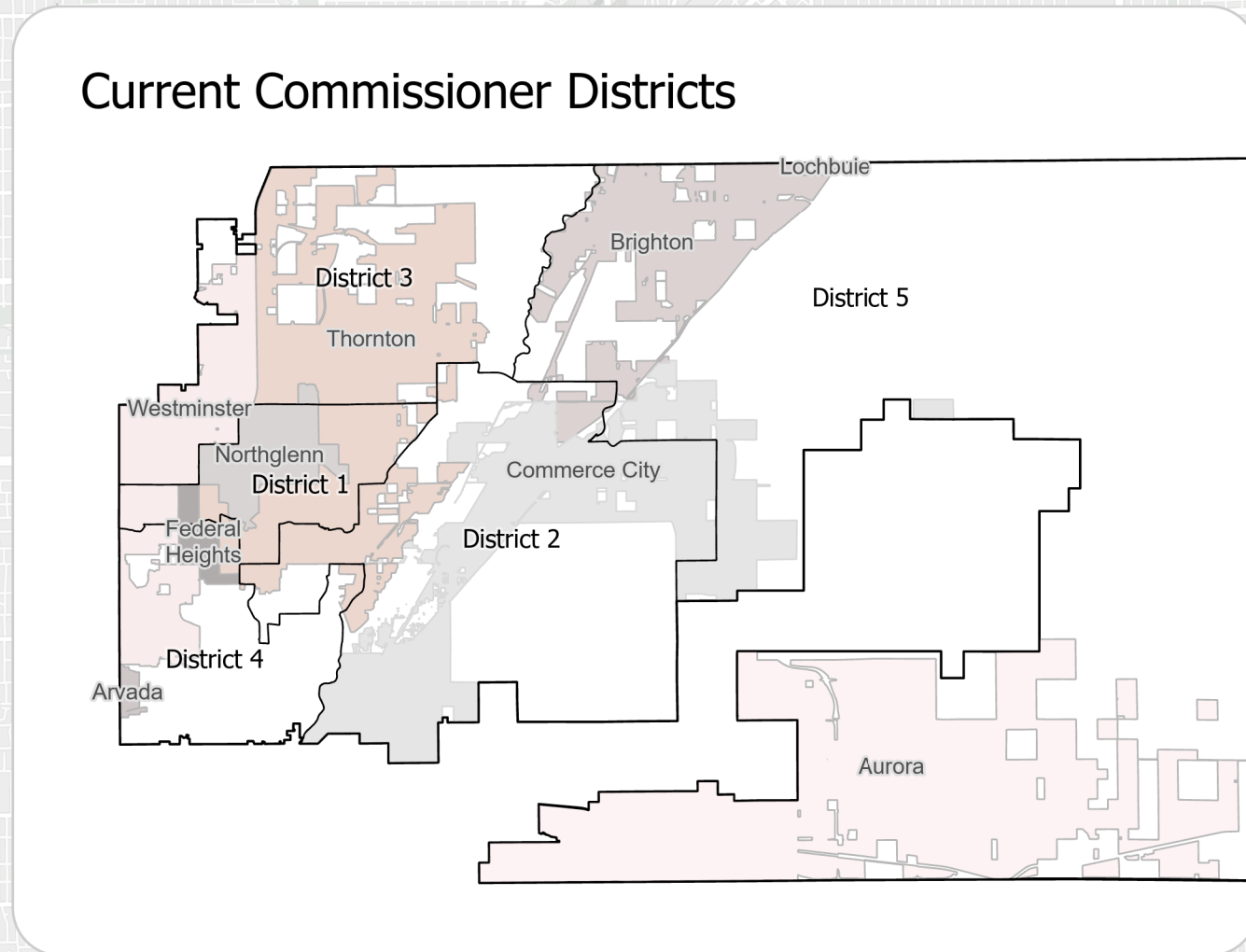
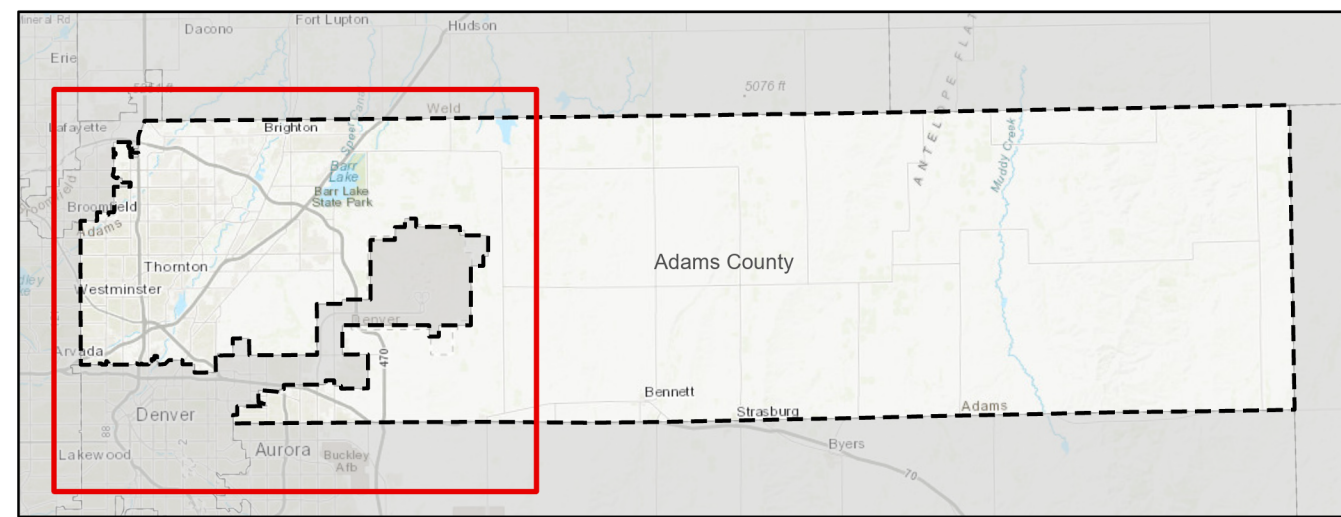
- Arvada
- Aurora
- Bennett
- Brighton
- Commerce City
- Federal Heights
- Lochbuie
- Northglenn
- Thornton
- Westminster

- Scenario C Commissioner Districts
- Current Commissioner Districts

For more information about the redistricting process, public meetings, and how to provide input, please visit the County's website at [www.adccog.org/redistricting](http://www.adccog.org/redistricting) or by scanning this QR code:



Census Block Groups are larger geographies and provide closer comparison of future year's Census estimates which are tabulated to the Block Group level.



Adams County makes no representations or warranty as to the completeness, accuracy, timeliness, or content provided on this map. Adams County expressly disclaims all warranties, whether express or implied, including any fitness for a particular purpose. Although every reasonable effort has been made to ensure the accuracy of the information provided in the dataset(s), Adams County cannot be responsible for consequences resulting from omissions or errors in the information and graphic representations made herein. It is understood that the information provided on this map is being used at one's own risk. Nothing stated herein is intended to be, or should be interpreted as, a waiver of the Governmental Immunity Act, §§ 24-10-101 to 120, C.R.S. Users should consult with Adams County to ascertain whether any modifications have been made since the publication of this material.