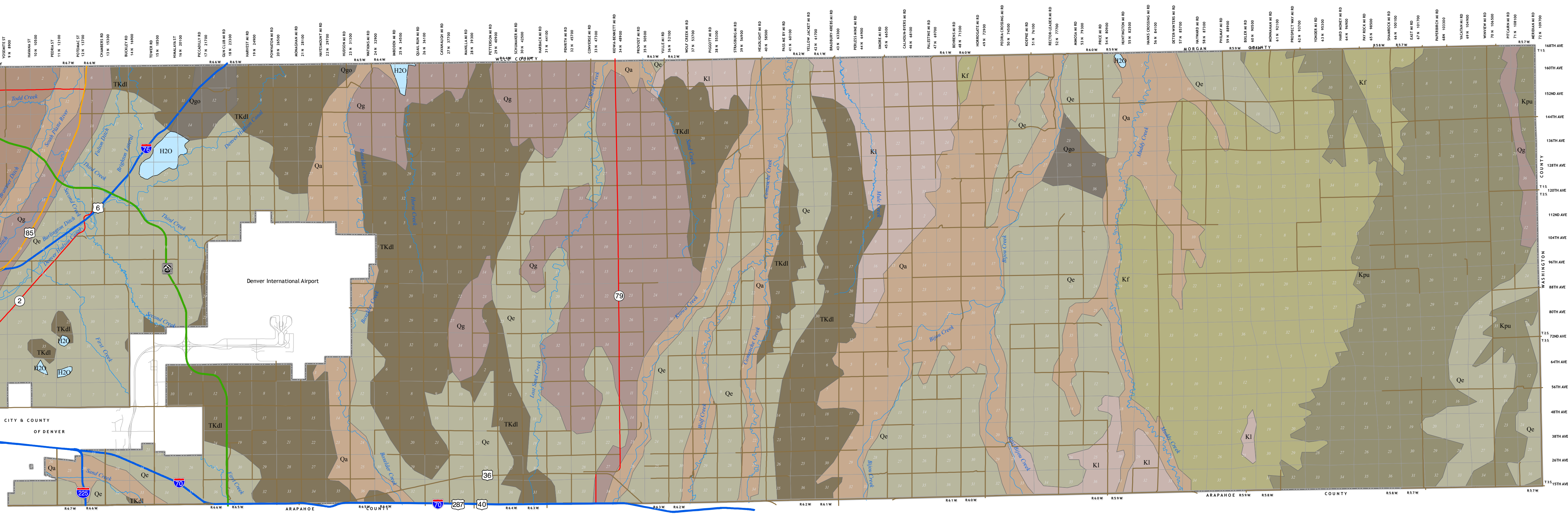


# GEOLOGIC FEATURES ADAMS COUNTY COLORADO 2005

\*\*The geologic data was created, at a scale of 1:500,000, from the original scribe sheets used to prepare the published "Geologic Map of Colorado" (Tweto 1979)\*\*

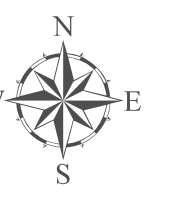
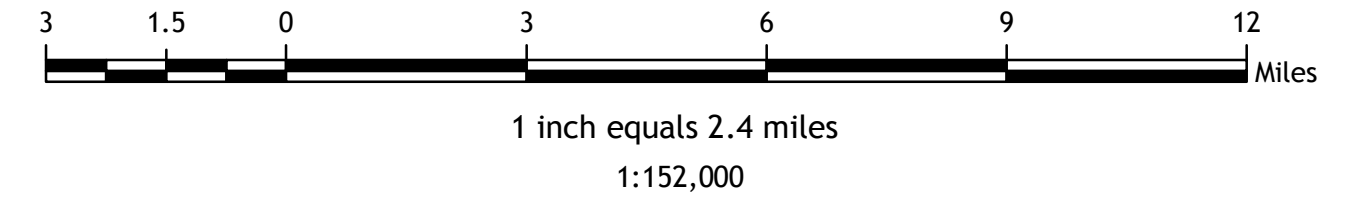


Legend	
	Primary Waterways
	Geologic Feature
	Sections
	County Boundary
	Kf
	Kl
	H2O
	Kpu
	Qa
	Qgo
	Qe
	TKdl
	TKda
	Roads
	US Hwy
	Tollway
	State Hwy
	Interstate

**Qa** MODERN ALLUVIUM--Includes Pine Creek Alluvium and younger deposits  
**Qe** EOLIAN DEPOSITS--Includes dune sand and silt and Peoria Loess  
**Qg** GRAVELS AND ALLUVIUMS (PINEDALE AND BULL LAKE AGE)--Includes Broadway and Louviers Alluviums  
**Qgo** OLDER GRAVELS AND ALLUVIUMS (PRE-BULL LAKE AGE)--Includes Slocum, Verdos, Rocky Flats, and Nussbaum Alluviums in east, and Florida, Bridgetimber, and Bayfield Gravels in southwest

**TKda** DENVER AND ARAPAHOE FORMATIONS--Sandstone, mudstone, claystone, and conglomerate; Denver is characterized by andesitic materials  
**TKdl** DENVER FORMATION OR LOWER PART OF DAWSON ARKOSE--Arkosic sandstone, shale, mudstone, conglomerate, and local coal beds

**Kf** FOX HILLS SANDSTONE  
**Kl** LARAMIE FORMATION--Shale, claystone, sandstone, and major coal beds  
**Kp** PIERRE SHALE, UNDIVIDED, Upper unit



Adams County Department of Planning and Development  
 Western Service Center  
 12200 N. Pecos St.  
 Westminster, CO 80234  
 303-453-8800

Disclaimer:  
 Although every reasonable effort has been made to ensure the accuracy of the information provided on this map, Adams County cannot be responsible for consequences resulting from omissions or errors in the information and graphic representations made herein. Users should consult with the Adams County Planning Department to ascertain whether any modifications have been made since the publication of this material.