

IS THE ADAMS COUNTY FOSTER CARE PROGRAM RIGHT FOR YOU?

We value and are looking for foster parents who...



1 UNDERSTAND LAWS

Everything in child welfare is guided by a set of laws as well as professional, ethical and moral obligations..



2 SUPPORT AND ENCOURAGE REUNIFICATION

Your family must be ready, willing and able to support reunification. It is important to believe that biological parents can overcome the obstacles that brought them to this place.

We are looking for homes for children, not children for your family.

3 MEET WITH AND SUPPORT BIO -FAMILY



we require all foster parents to participate in Icebreaker meetings . These meetings allow for parents and foster parents to exchange information about the child. They are an important building block to supporting reunification.

4 PROVIDE AN AFFIRMING HOME



An affirming home is one where the parents publicly declare that all LGBTQ + children and youth are welcome and encouraged to live authentically ,in all aspects of family life. And where all children and youth are treated with respect and dignity, and with parents who diligently work to meet their child and youth's unique needs.

Why is this so important?

More than 34% of LGB youth have attempted suicide. (National Date from the Center for disease Control and Preventions, Youth Risk Study 2015)

Approx. 45% of transgender youth have attempted suicide (Mental health of transgender and gender non-conforming youth compared with their peers, Journal of Pediatrics, 2018)

It is important to understand that any child or youth at any age may come out to their family. We as an agency must ensure that all families we certify to provide foster care or who may adopt child from foster care are an LGBTQ+ affirming home.



5 ACCEPT A CHILD CHILD OF ANY RACE OR ETHNIC GROUP INTO YOUR HOME

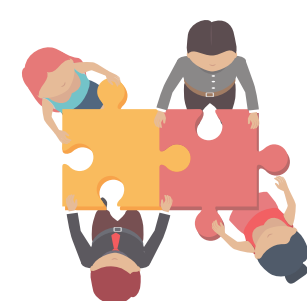
Adams County is made up of many ethnic groups with diverse cultures. We need homes who are willing to take a child of any race or ethnic group.



6 VACCINATE YOURSELF AND YOUR CHILDREN

All household members must be up to date with vaccinations.

Adults must received the flu and shot each year when caring for 0-1 year old children and medically fragile children



7 BE A TEAM MEMBER

Once you begin your journey as foster parent with Adams County, it is important to understand you will be a member of a team.

Provide transportation to school and for parental or sibling visitation



8 PROVIDE EDUCATIONAL STABILITY

Educational stability is important. In most cases children will remain in their school of origin unless it is determined a school change will be in their best interest.


FOSTER
 — *Hope* —
ADOPT
 — *Love* —
ADAMS COUNTY KIDS

To join us
 Email: fostercare@adcogov.org