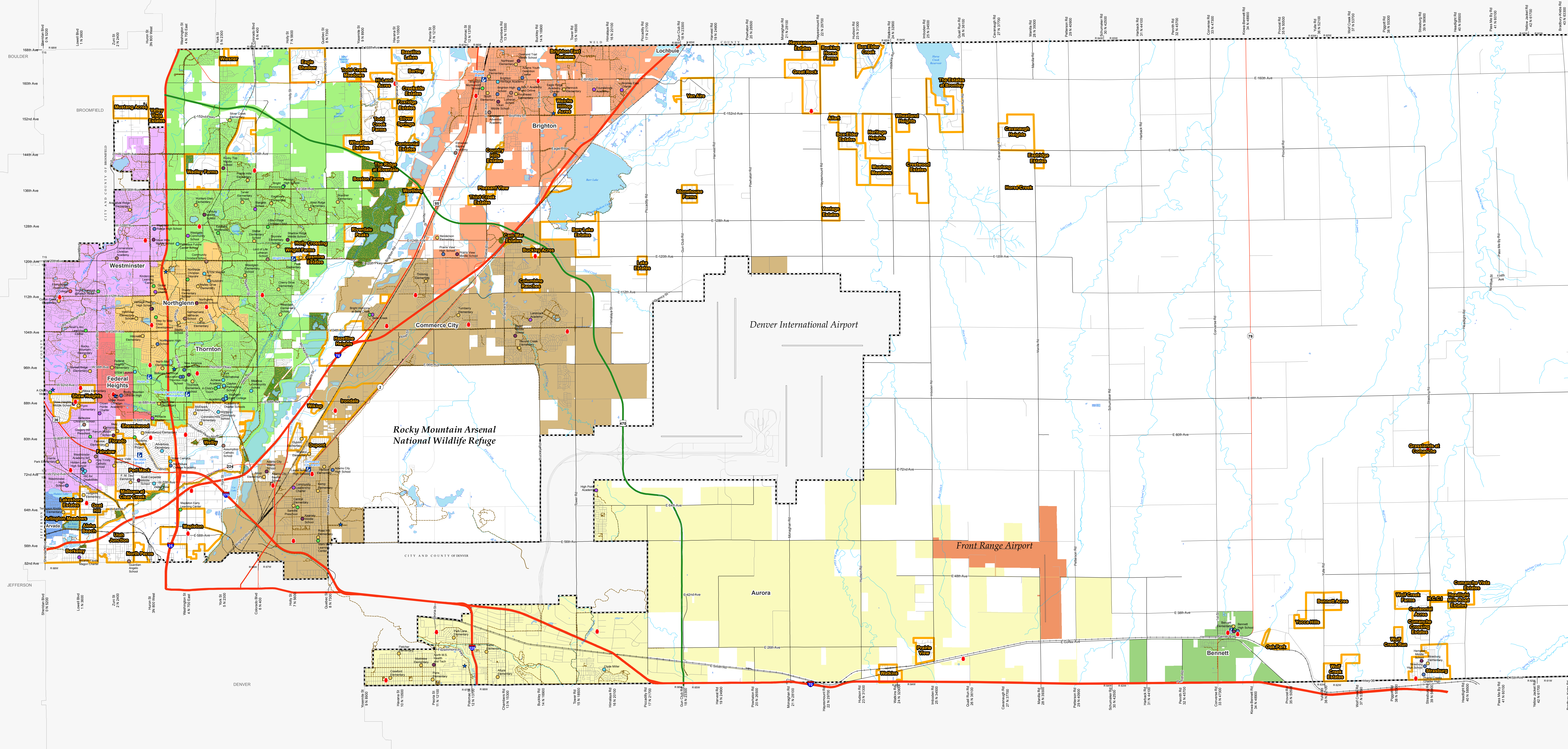


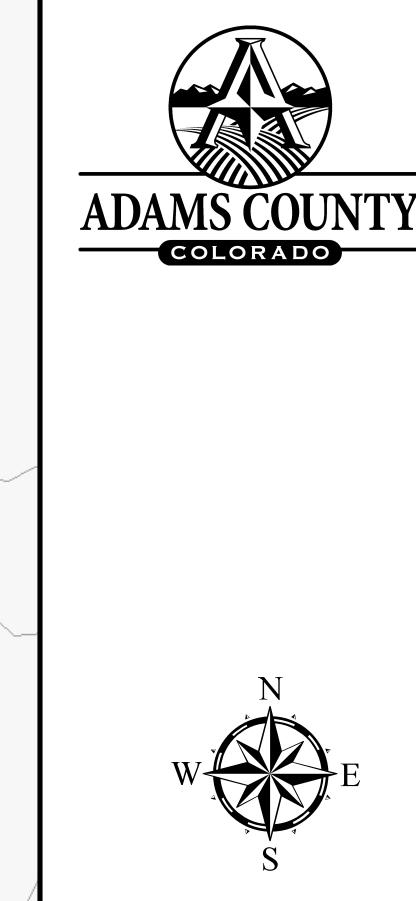
Adams County, Colorado

Communities Map

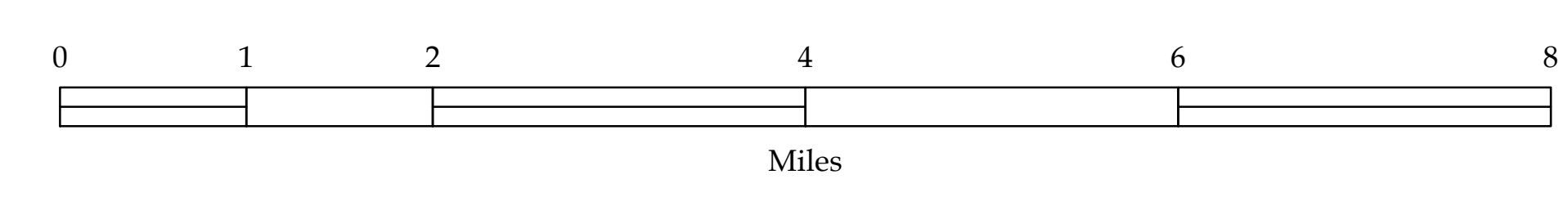


Legend

- | | | | | |
|------------------------|-------------------|-------------------|-------------------|-----------|
| ★ Police Station | — Railroad | City | ● Administration | ● High |
| ● Fire Station | — River | ■ Arvada | ● Charter | ● Middle |
| 📖 Library | — Trail | ■ Aurora | ● College | ● Other |
| 🌊 Lake | ⬛ County Boundary | ■ Bennett | ● Early Education | ● Private |
| 🌳 Parks and Open Space | | ■ Brighton | ● Elementary | |
| | | ■ Commerce City | | |
| | | ■ Federal Heights | | |
| | | ■ Lochbuie | | |
| | | ■ Northglenn | | |
| | | ■ Thornton | | |
| | | ■ Westminster | | |



Disclaimer:
 Although every reasonable effort has been made to ensure the accuracy of the information provided on this map, Adams County cannot be responsible for consequences resulting from omissions or errors in the information and graphic representations made herein. Users should consult with the Adams County Business Solutions Group to ascertain whether any modifications have been made since the publication of this material.



Adams County Business Solutions Group
 4470 South Adams County Parkway
 Brighton, CO 80601
 www.adco.org/igs
 Date: 1/22/2018