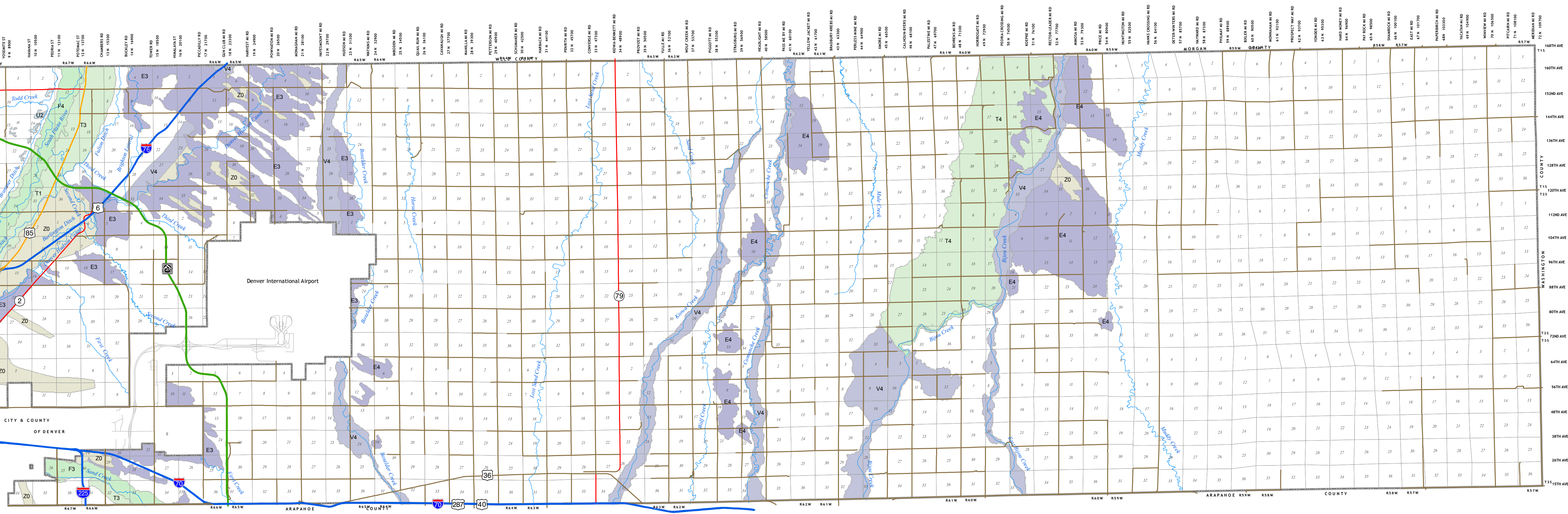


SAND AND GRAVEL RESOURCES ADAMS COUNTY COLORADO 2005

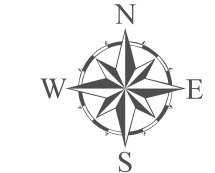
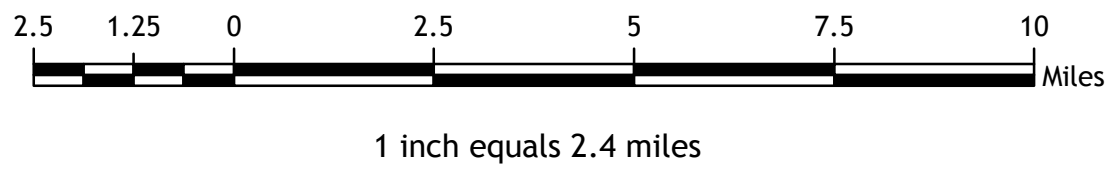


Legend

- Primary Waterways
- Sections
- County Boundary
- Aggregate Resources
- Landform Unit and Resource Class
- Landform Unit: F1, F3, F4, T1, T2, T3, T4, U1, U2, U3, U4, V1, V2, V3, V4, Z0
- Roads: Major, State Hwy, Interstate, US Hwy, Tollway

- ### Landform Unit
- F = Floodplain deposit
 - T = Stream terrace deposit
 - U = Upland deposits
 - V = Valley fill (floodplain and/or terrace deposits)
 - Z = Not mapped

- ### Resource Class
- 0 = Originally unlabelled/unknown
 - 1 = Gravel; relatively clean and sound
 - 2 = Gravel; significant fines, decomposed rock, calcium carbonate
 - 3 = Sand
 - 4 = Probable aggregate resource



Adams County Department of Planning and Development
Western Service Center
12200 N. Pecos St.
Westminster, CO 80234
303-453-8800

Disclaimer:
Although every reasonable effort has been made to ensure the accuracy of the information provided on this map, Adams County cannot be responsible for consequences resulting from omissions or errors in the information and graphic representations made herein. Users should consult with the Adams County Planning Department to ascertain whether any modifications have been made since the publication of this material.