

**ADAMS COUNTY TASK ORDER
FOR: VETERANS MEMORIAL CONCEPT DESIGN**

Date: May 24, 2019
Master Contract #: 2018.447

Task Order #: 1
Project #: 2019.060

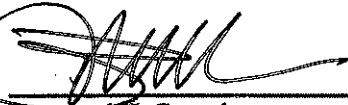
In accordance with the above referenced Master Contract between Adams County Colorado, and DHM Design, dated March 19, 2019, the provisions of the Contract and any Amendments thereto affected by this Task Order are modified as follows:

1. **Task Order Description.** Contractor shall perform the task(s) listed in Contractor's Task Order Proposal dated May 17, 2019, which is incorporated by reference herein in accordance with the provisions of the Master Contract (#2018.447).
2. **Price/Cost.** The maximum amount payable by the County for performance of this Task Order is the not to exceed amount of \$35,000.00.
3. **Performance Period.** Contractor shall complete its obligations under this Task Order on or before December 31, 2019.
4. **Effective Date.** The effective date hereof is upon approval of the County or the Board of County Commissioners, whichever is later.

IN WITNESS WHEREOF, the County and the Contractor have caused their names to be affixed.

*Person's signing for Contractor hereby affirm that they are authorized to act on Contractor's behalf and acknowledge that the County is relying on their representations to the effect.

**ADAMS COUNTY, COLORADO
COUNTY MANAGER**



Raymond H. Gonzales

9 July 2019

Date

DHM Design



Signature*

7.5.19

Date

MARK WILCOX

Printed Name

PRINCIPAL

Title

Attest:

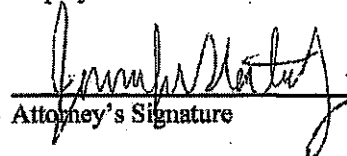
Josh Zygielbaum; Clerk and Recorder



Deputy Clerk

APPROVED AS TO FORM:

Adams County Attorney's Office



Attorney's Signature



Response to Request for Proposals for

Adams County Veterans Memorial Concept Design Project

May 17, 2019

Submitted by:

DHM DESIGN LANDSCAPE ARCHITECTURE
URBAN DESIGN + LAND PLANNING
ECOLOGICAL PLANNING

SACRIFICE

May 17, 2019

Adams County, Colorado
Attn: Cyndi Stringham, Project Manager, Facilities and Fleet Management
4430 South Adams County Parkway, 1st Floor, Suite C1700
Brighton, Colorado 80601-8214
720.523.6305 | cstringham@adcogov.org

RE: Response to Request for Proposal for Adams County Veterans Memorial Concept Design Project

Dear Members of the Selection Committee,

Memorials are places of reflection and honor. They offer respect, as well as celebration of the brave men and women who serve in the armed forces. They also can be places of education for younger generations to understand the sacrifice, context and complexity of military service. On behalf of the DHM Design Team, we express our sincerest excitement for the opportunity to continue working with Adams County through the Request for Proposal for Adams County Veterans Memorial Concept Design project. Having worked on Veterans Memorial projects here in Colorado and across the nation, we understand the significance of such a project for our veterans here in Adams County.

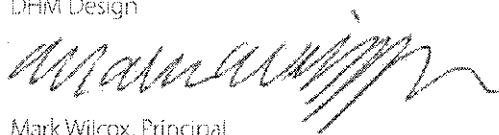
We will work hand in hand with the County and stakeholders to develop a concept that is practical, easily maintained and has a degree of support by the community and stakeholders. Our team will bring creative site design solutions that will ensure the Veterans Memorial Concept Design is unique and will create a dynamic experience. We will draw from our expertise on projects of a similar size and scope including memorial projects from our local work on the Armed Forces Tribute Garden in Westminster Colorado, Veterans Memorial outside the VMAC in Thornton, Colorado, a Veterans Memorial in Commerce City, Colorado and national memorials including Mount Rushmore in South Dakota, New Jersey and Korean War Memorial in New Jersey.

Mark Wilcox will lead our design team as the Principal-in-Charge and Primary Point-of-Contact. He is a leader in site design and landscape architecture with over 24 years of experience helping communities and government agencies develop effective and sustainable solutions deeply rooted in community participation. His work has focused on public spaces and how to best engage a community to interact with and use these spaces.

DHM Design is available to begin the Adams County Veterans Memorial Concept Design project immediately. We have provided a project approach and detailed scope of work in an outline format with associated fees to meet the project budget as indicated in the RFP. This letter also acknowledges receipt of Addendum #1. DHM does not have any exclusions or exceptions with the contract terms at this time.

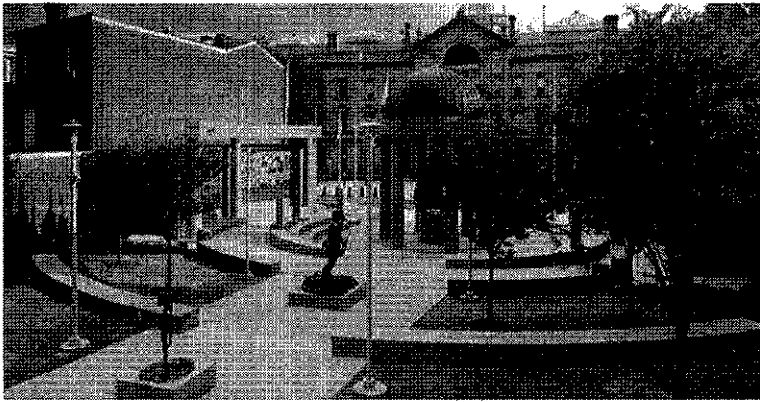
We are eager to help you realize this vision. Our proposal demonstrates that we have the experience, capacity and excitement to successfully complete this project for the County. Thank you for the opportunity to assist you with this important project. If you have any questions during your review of this response, please do not hesitate to call Mark Wilcox at 720.763.3966 or email at mwilcox@dhmdesign.com with any questions or concerns. We look forward to continuing our relationship with Adams County.

Sincerely,
DHM Design



Mark Wilcox, Principal

Adams County Veterans Memorial Concept Design Project



Letter of Interest

Table of Contents

- 1 Understanding of the Project
 - Project Understanding and Approach
 - Scope of Services and Work Plan
 - Proposed Schedule
- 6 Similar Project Experience
- 11 Design Team
 - Organizational Chart
 - Company Background
 - Key Personnel Resumes
- 13 Fee Proposal
 - Proposed Fee Schedule
 - Hourly Rates

Project Understanding



Korean War Memorial; Atlantic City, New Jersey

We understand that Adams County is seeking a landscape architect to provide Concept Designs for their Veterans Memorial Project. As part of this effort, we will assist the County in site selection and the approval and permitting process. Our team will collaborate with the selected artist to represent all branches of the Military in the design. We will provide concept design options and renderings, as well as opinions of cost for comparison. The team will also provide an opinion of anticipated schedule for contract documents and construction.

Site Selection

Our team can assist the County to develop criteria and influencing factors that will help determine the optimal site for the new memorial. We understand you are currently looking at the Riverdale Regional Park and can establish a decision-making framework to solidify that selection, weighing factors such as site topography, contextual character and uses, views, connections and access.

Working with Artists

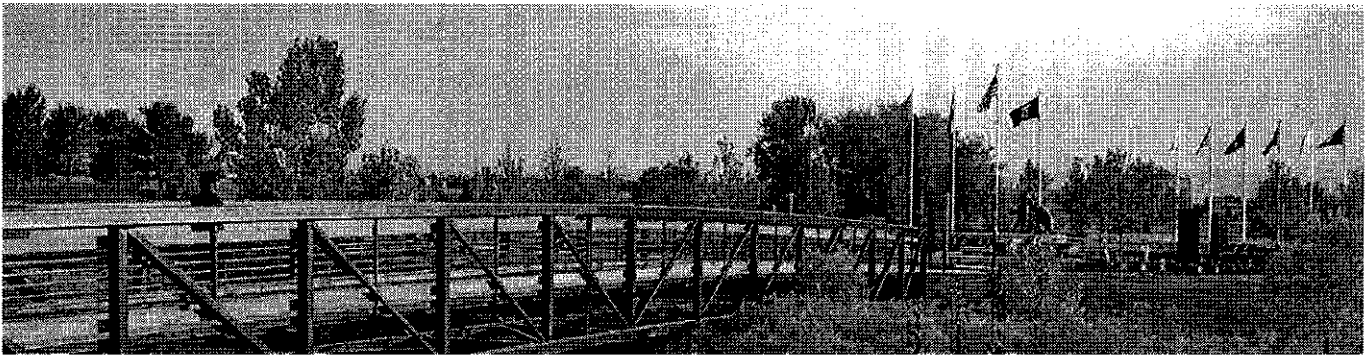
Memorial design is very personal to each community. We have a long history of collaborating with artists for sculptural features or site furnishings that are reflective of the vision and priorities for the project. From initial artist selection through the design process and into construction, we understand the importance of fitting final art pieces naturally into the site so they are visible, appropriately scaled, secure and allowed to celebrate the intent of the memorial itself.

Accessibility

Designing for inclusion enables people of all abilities to navigate, interact with and contribute to a place. It reduces stigma by putting people with disabilities on an equal playing field. How they arrive, move through, and exit each site is a critical factor when determining overall layout, drainage, parking, utilities and lighting. We work with our consultants to look at this issue in the big picture and small details to determine the best layout and design for each unique site. Walking distances and grade changes are often a challenge.

We ensure accessible parking stalls are designated, along with accessible routes. Snow removal, drainage and icing are also considered, to provide year round access to the site. Where possible, our designs also address those who may be visually or hearing impaired to provide the greatest range of experience to all who visit to the site. We embrace accessibility guidelines as we would any set of design constraints. They are part of the challenge of creating amazing barrier-free environments.

Scope of Services and Work Plan



Armed Forces Veterans Memorial; Westminster, Colorado

DHM Design is providing the following Scope of Services and Fees for Adams County Veterans Memorial Concept Design Project. We have broken our Scope of Services into two phases to better understand the work effort required.

- Phase 1 – Programming Analysis, Data Collection, and Site Feasibility Study
- Phase 2 – Conceptual Design Process

A proposal for final designs will be pending the results of the concept design and as requested by the county.

Phase 1 Programming Analysis and Site Feasibility Study

We begin the project with a kickoff and orientation meeting with the County staff, followed by initial gathering of information and physical site assessments of any proposed locations. During this meeting we begin to establish a vision and identify goals and priorities. Communication with the design team will continue and be the basis of preparation of an outline of our work plan and schedule. We will want to review the Riverdale Regional Park Master Plan to identify potential locations and discuss these with County staff and members of a stakeholder group to determine best possible locations that consider site constraints, future development plans, access, and other priorities identified by the project team.

Early goals previously identified by the County are to develop programming and to create a conceptual design for the Adams County Veterans Memorial and to review the feasibility of sites for location of the memorial.

We will work with you to refine these goals and build upon this vision to create a framework for decision making that will guide the conceptual design process. We want to have this discussion early on in the design process to confirm goals, vision and establish a direction in developing a concept design that meets all your needs with the desired outcome.

DHM Design will create a finalized Work Plan Document that includes the following tasks that we will use to organize our approach to conceptual design.

1. Work Plan
2. Data collection/ Site Investigations
3. Project Team/ Stakeholder input process
4. Draft conceptual design alternates process/ Final conceptual design

This work plan will identify milestones, work sessions, opportunities for review and feedback and all the tasks necessary to seek approval for the master plan.

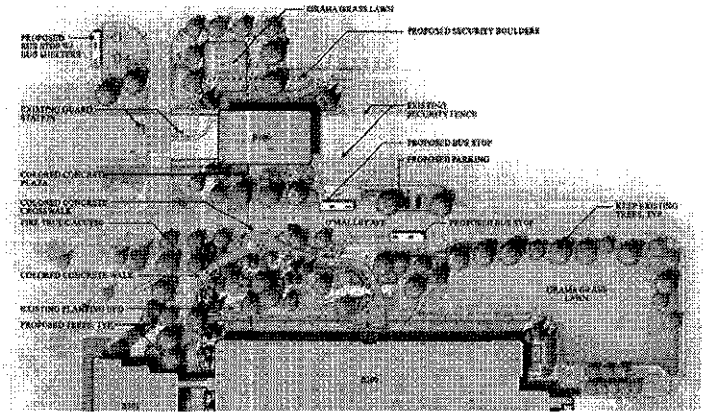
Data Collection/ Site Investigations

Develop Work Plan/ Public Engagement Plan– We will develop a work plan with tasks, schedules and deliverables to develop a final master plan document with priorities identified.

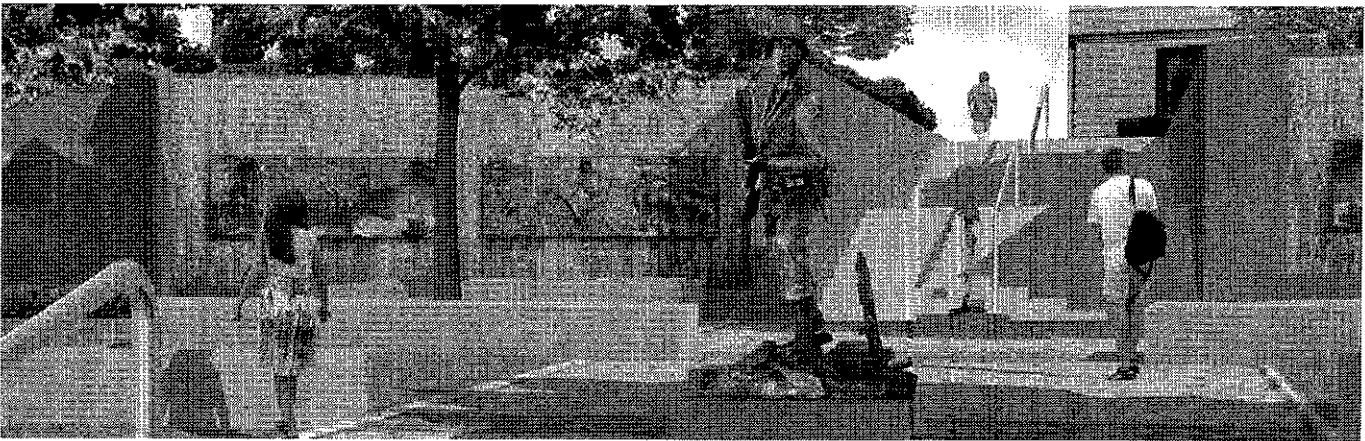
Data Collection, Memorial Tours, & Review Existing Information– We will collect data, previous master plans and review previous planning to develop guiding principles and programming goals that will direct the design solutions for the conceptual design alternates. Site tours of similar memorials within the Front Range will be conducted to review programming, materiality and to gain a better understanding of vision and desired outcome.

Site Review/Programming Analysis/Site Inventory Analysis

– A complete site inventory and analysis of existing amenities and features will be completed for each potential site to aid in the site feasibility study in determining a preferred site for the Veterans Memorial. We will incorporate current discussions that the County has had with the design team regarding the development of the Veterans Memorial, including goals as they relate to access, site development, adjacencies, circulation, views, future park development, and others to be better oriented towards evaluation of the site for the location of the Veterans Memorial. Site feasibility will be reviewed with the project team to determine a preferred location for the memorial.



DHM Design | 3



World War II Memorial; Trenton, NJ

Develop Illustrative Graphics and Conceptual Design

Detailing – Graphics will be developed that look at design details of the memorial and what features may begin to look like. Concepts will include hand drawn illustrations, cross sections and other detailed graphics as necessary to convey the intent of the design concepts. Site programming associated with the memorial including walks, access, landscape, drainage, etc. will be reviewed in context with the approved site. 3D Sketchup models of the proposed concept alternates will be developed to understand the designs, spatial hierarchy, scale and experience of the memorial. We feel 3D images will help to better understand the alternates in order to make an informed decision on a final concept.

Preferred Concept Design– At a progress meeting we will establish a preferred design direction for the preferred concept design. This process will review all alternatives to determine a preferred concept or combination of alternatives. This final concept design will include final rendered master plan graphics, cross sections, 3D Visualizations and other detailed graphics as necessary to convey the intent of the design. Materials will be reviewed, coordination and collaboration with an artist will continue and communication with the project team will be on-going throughout.

Preliminary Cost Estimate – An overall conceptual level construction estimate of probable costs will be prepared for the various alternatives and updated for the final concept design to aid in the planning and decision making process for implementation.

Final Concept Design Report – A final conceptual design report will be developed that includes the process utilized to develop a preferred concept, feedback heard, options developed, site feasibility studies and will look at implementation and phasing strategies for development. Technical review will be documented that highlights certain aspects of the goals including discussions on water quality, aquatic habitat restoration, wetland and riparian restoration, bathymetry, adjacent land owner mitigation strategies, water management strategies and other critical issues that come up during the master planning process.

Develop 3D Model of Memorial and Photo Simulations –

We will develop a 3D model of the concept alternates and preferred concept that depicts the entire plan from an aerial perspective and people eye view. The level of detail for this model will be enough to understand general design features and details. 3 photo simulations/ 3D renderings will be developed to a higher level of detail that reflect more of the character of specific site design details and may be more of a ground level perspective or slightly elevated perspective. These renderings will be of the final master plan only.

Work Products

- Artist Collaboration
- Alternative Concepts (3) for memorial concept development. Hand drawn and rendered. 3D Sketchup Model
- Preferred Concept Plan
- 3 Final High Quality 3D Visualizations of Preferred Concept Plan in Lumion
- Estimate of Probable Construction Costs for the Alternative Concepts and Preferred Concept Plan
- Final Concept Design Report
- Estimated Final Design and Construction Schedule

Meetings

- Bi-Weekly Meetings with County and Project Management Team



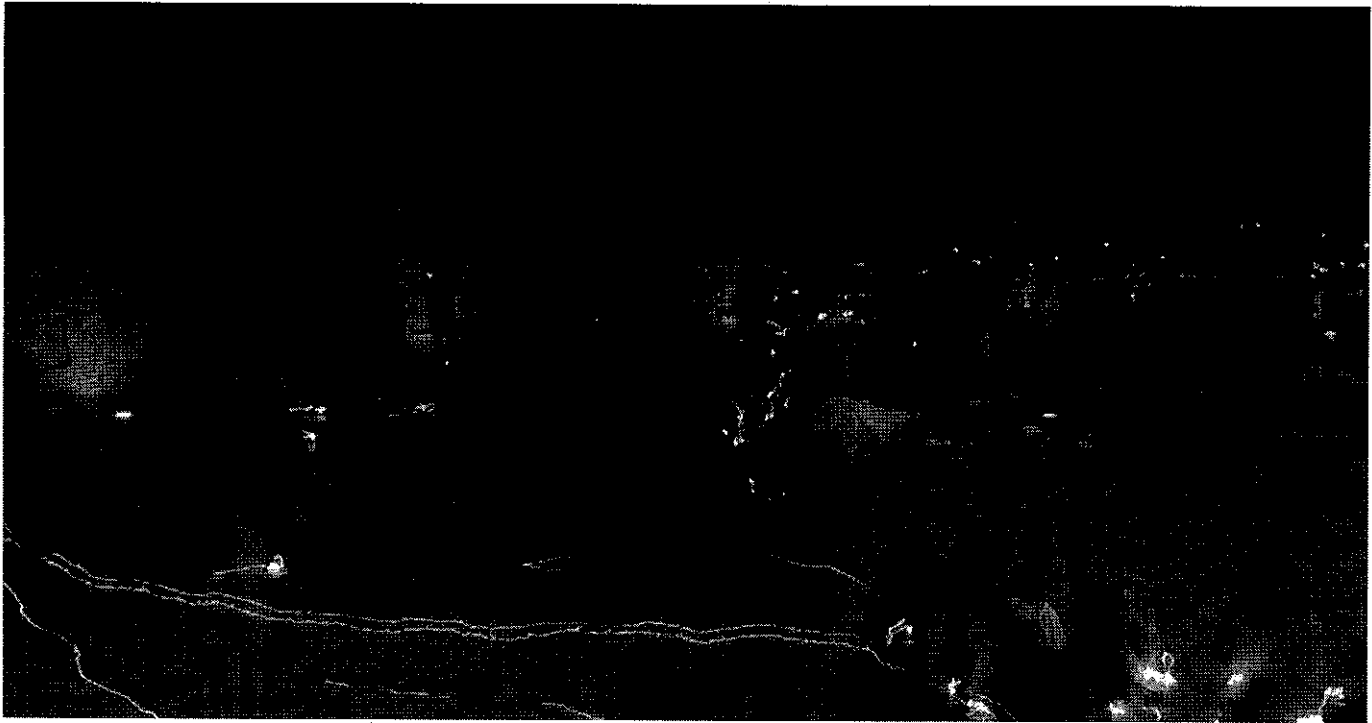
Avenue of Flags; Mount Rushmore National Memorial

Proposed Schedule

Adams County Veterans Memorial Concept Design Project

Proposed Schedule and Tasks	May			June			July			Aug			Sept		
Anticipated Award May 24, 2019															
Phase 1 Programming Analysis and Site Feasibility Study - 6 weeks															
Conduct project kickoff meeting with Adams County Parks staff for discussions concerning project design development, phasing, scheduling and public outreach process. Consultant shall provide a project schedule with key milestones and submittals. Prepare final work plan based on conversations with County and Project Team.															
Develop Work Plan/ Project Permitting and Approval Plan															
Data Collection, Memorial Tours, & Review Existing Information															
Site Review/Programming Analysis/Site Inventory Analysis															
Character Image Board to Review Programming Opportunities															
Feasibility Report															
Meetings with County and Project Management Team (2)															
Phase 2 Conceptual Design Process - 4 Weeks Alternate Development/ 4 Weeks Final Concept															
Participation in Approval and Permitting Process															
Collaboration with Artist															
Draft Concept Alternates (2 to 3 alternates)															
Preferred Concept Design															
Preliminary Cost Estimate															
Final Concept Design Report															
3D Model of Memorial and Photo Simulations															
Meetings with County and Project Management Team (4)															

◆ Specific meeting dates will be set up at kick-off meeting.



Columbine Memorial | Littleton, CO

Monument and Memorial Design

To balance history, emotion and the future in one simple bold movement, memorials have to be more than a tribute to the past. They must be designed as a dynamic experience that changes the visitor and realigns emotional memory, social use and physical space.

Through design workshops and shared input, memorial plans stem from the people for which they mean the most. Often, our role is to derive inspiration from the work already done to date and interpret that vision - all working toward the final realization of a testament to the values of the community. At the Columbine Memorial, we used a community-based process to discover the true meaning of memorial expression. Over the course of ten years, we renovated the Mount Rushmore experience, creating a sense of arrival and grandeur that befits such a national treasure. Our work at the New Jersey World War II Memorial used new mediums and classic design principles to bring the sacrifice and successes of the Greatest Generation to life. Overall, we emphasize a respect for historical relationships to the context and character of each individual project.

Whether formal or impromptu, in stone or meant to weather away, memorials are a critical piece of our cultural identity and shared memory. There is no guidebook for their design, only the desire to maintain the integrity of purpose. In most cases, the process is just as important as the end result. Our job is to evoke feelings and recognize the personal nature of each project.

Monuments and memorials act as vehicles for introspection and remembrance. Often, the message is one of resilience and the opportunity for people to leave with a different perspective than they arrived. The visitor experience is brought into the shining spotlight as individuals walk through physical symbols of memory and history. Material selection and the overall character of each space are carefully determined based on the unique people and story that begs to be told.

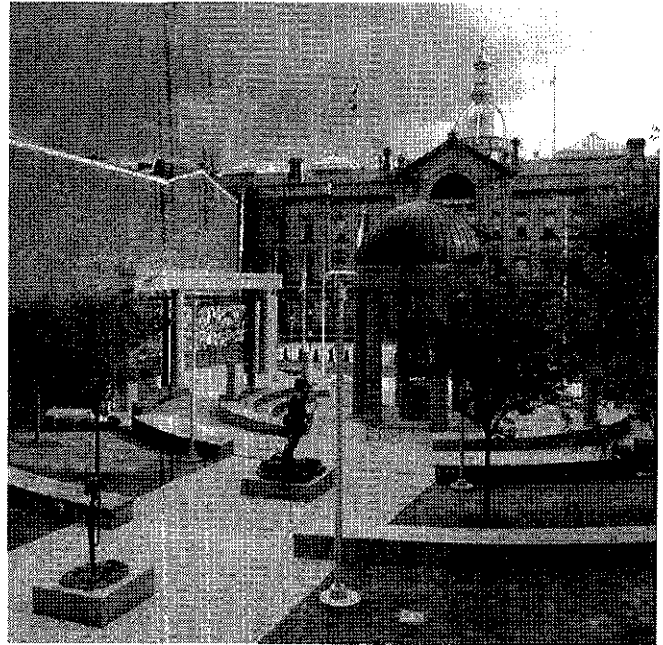
As an architectural form, memorial designs emerge at the intersection of art, history and personal interpretations. They are moments in history that take years or even decades to fully realize into a collective expression of grief, wonder, understanding or healing in a way that is meaningful to those inside and outside the actual experience.

The complex relationship of working with highly invested stakeholders is something our design team faced throughout the planning process for the **Columbine Memorial** honoring the innocent victims of the April 20, 1999 shooting at Columbine High School. From the beginning, the challenge was to understand that our audience was on one level, the parents of 12 children and 1 teacher brutally murdered at Columbine High School. On another level, it was the injured students and their families, and the community surrounding the school. And at an entirely different view, the memorial audience was the shocked nation, instantaneously informed and influenced by the media and Internet. From concept through construction, the families and community needed to be heard and recognized. It became a memorial to the slain and injured, but also a testament to their loved ones' tragedy and a story they told in their own voices. Many times, fundraising becomes integral to a memorial's completion, raising the importance of the storytelling ability of the design team to inspire action, support and volunteerism.

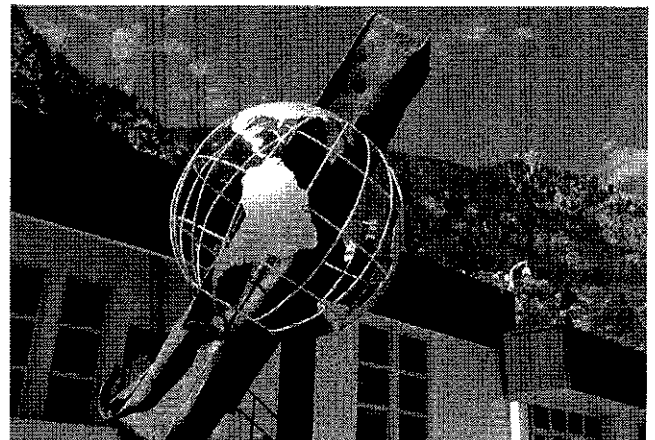
We understand how to be part of a team that assists communities through this complex process to bring memorials from initial idea to the first visitor. The **New Jersey World War II Memorial** was conceived and constructed through the dedication of the local veterans groups; DHM provided fundraising graphics and support to inspire action and support from donors to complete the memorial. Today, it is a place that allows visitors to learn, reflect, and appreciate that sacrifice of WWII Generations by utilizing the environment, art, history, and water elements throughout.

For the 9/11 Memorial at Schriever Air Force Base, DHM Design worked with the client to create a space that honored the victims and acknowledged the strength of our country's resilience in the face of tragedy. Artwork that incorporated pieces from ground zero celebrated the lives lost and stands to educate the younger soldiers and airmen on the effect Sept. 11 had on citizens and service members.

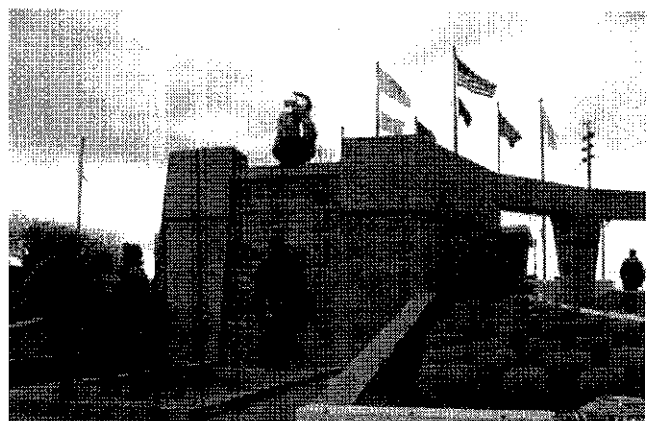
The **Korean War Memorial** is located along Atlantic City's historic Boardwalk and Park Place is among one of the busiest pedestrian spots in the state. The upper plaza parallels the Boardwalk and contains a black polished granite name wall that recognizes the 822 New Jersey soldiers killed in action during the war. It is engraved with the quote "Freedom is not free." In addition, there is a 13-foot bronze sculpture of a mourning soldier and seven flags, which represent each military branch. Interactive electronic kiosks have also been implemented to allow visitors to learn about the Korean War. The lower plaza is located below the Boardwalk, with a reflecting pool, life-size bronze sculptures, and an eternal flame pay tribute to the fallen heroes of the Forgotten War.



World War II Memorial | Trenton, NJ

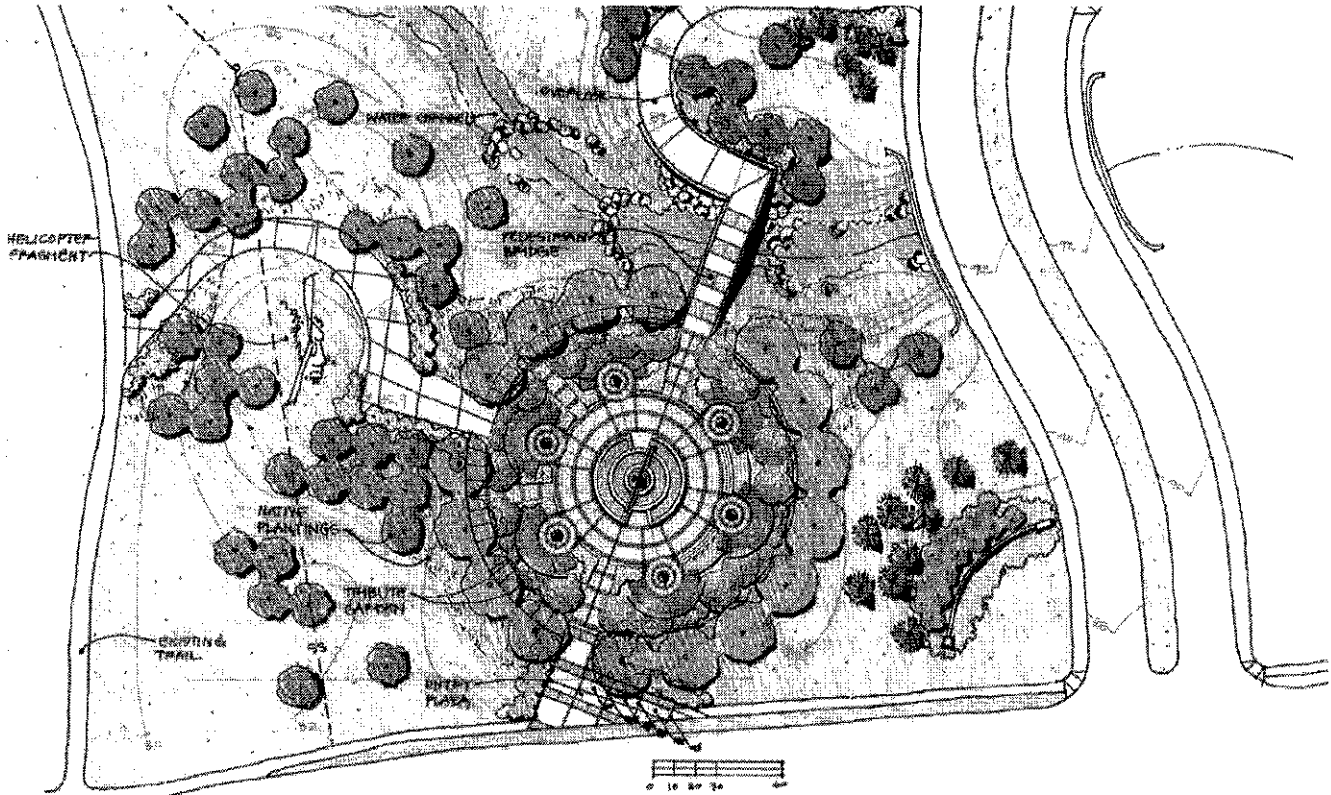


9/11 Memorial; Schriever Air Force Base



Korean War Memorial; Atlantic City, NJ

Site Specific Project Experience



Armed Forces Tribute Garden | Westminster, Colorado

DHM was hired by the City of Westminster to develop an Armed Forces Tribute Garden within an already outstanding park system. The developed park is a wonderful blend of historical layout and incorporates a varied program into a great setting. Master plan alternatives represent the four design schemes considered by the City and stakeholders. The final plan reflected a community's desire to honor its military veterans in a way that is unique and fitting to the City of Westminster. The Armed Forces Tribute Garden is located east of U.S. 36 on 104th Avenue between Christopher Fields and Big Dry Creek. The garden includes a dramatic central water feature, seating areas for rest and contemplation, granite pillars honoring those who serve or have served, extraordinary walkways with engraved pavers and beautiful landscaping. Every year on Armed Forces Day, the City of Westminster honors those who have served with a special ceremony at the Tribute Garden.

CLIENT

City of Westminster

PROJECT TEAM

DHM Design

PROJECT DATA

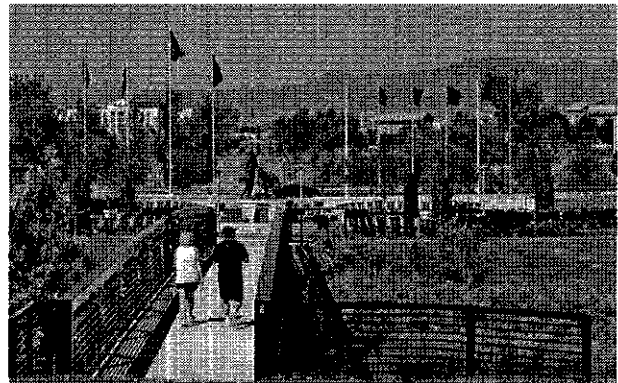
Memorial Design
City Park

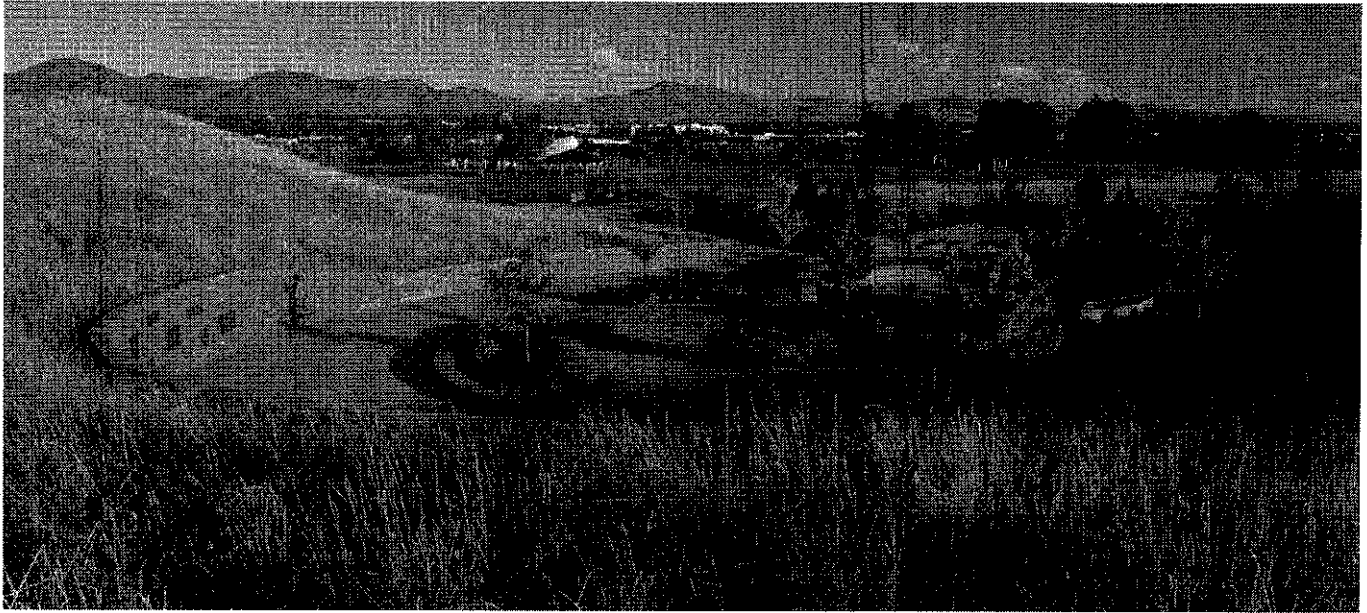
SERVICES

Conceptual Design
Design Facilitation
Landscape Architecture
3D Modelling
Schematic Design

STATUS

Complete





Columbine Memorial | Littleton, Colorado

CCASLA Honor Award for Design, 2009

CCASLA Merit Award for Planning & Urban Design, 2003

The Columbine Memorial is a standing testament of community sacrifice, collective compassion, and overwhelming nationwide support. Family members and visionary leaders sought significance in a permanent place of healing and reprieve to commemorate those who died, those who lost loved ones, and those who were injured in this unbelievable tragedy. The outcome of an extremely difficult and complicated process is a simple space to instill hope and courage. Those who reflect in the embrace of the hills surrounding the memorial fall under the symbolic protection of the distant Colorado Rocky Mountains. In nature is healing and in the symbology of a circular form is the continuum of life itself. People who venture to experience this place are surrounded by poetry in its greatest sense, the poetry of a community unified towards the ultimate purpose: to remember and to heal.

CLIENT

Foothills Park & Recreation District

PROJECT TEAM

DHM Design
Columbine Memorial Committee
Columbine High School
Rock & CO.
Pavestone
Dean Pierson
Tamara Delaplane
Pinkard Construction
Tad Savinar - Artist

PROJECT DATA

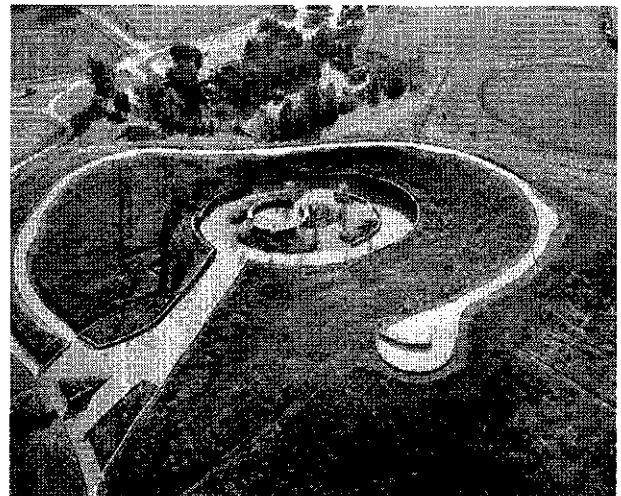
Located in Clement Park
Community Monument
6.5 Acre Site
Memorial Text
Water Feature

SERVICES

Memorial Design
Site Design
Landscape Architecture

STATUS

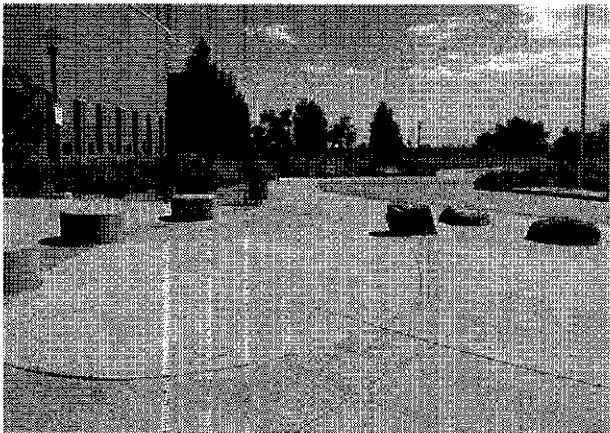
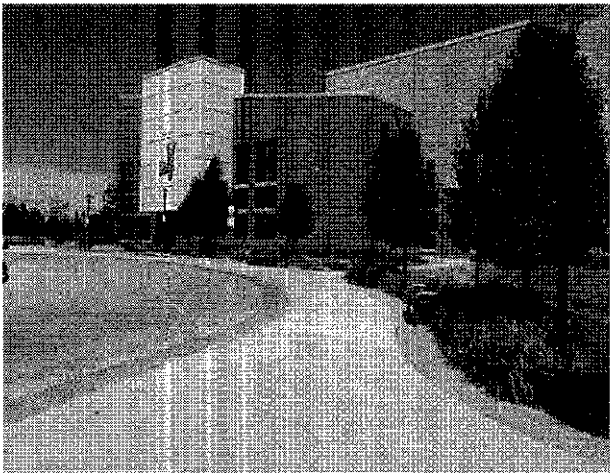
Completed





Veterans Memorial Aquatic Center | Thornton, Colorado

The Adams12 Aquatic Center is an approximately 40,000 sf facility located on roughly 17 acres with a 256 stall parking lot. Site elements consist of a formal drop-off, decorative entry plaza, sodded lawn space for picnicking and a planting palette including a variety of native, low water species which adds seasonal character and a variety of color throughout the site. DHM assisted in the schematic design of the parking lot, which included coordinating the vehicular approach, overall circulation, identifying drop-off and bus queuing locations and analyzing view sheds to and from the facility. To enhance the visitor experience and compliment the grand entry of the Adams12 Aquatic Center a quality entry plaza was incorporated, with an aquatic theme carried out in the adjacent planting arrangement and surface coloring. The deliverables included schematic design graphics for all site elements and fully developed construction documents for the plaza, walks and planting.



CLIENT
City of Thornton

PROJECT TEAM
Barker Rinker Seacat Architecture
DHM Design

PROJECT DATA
40,000 sf facility
17 acres

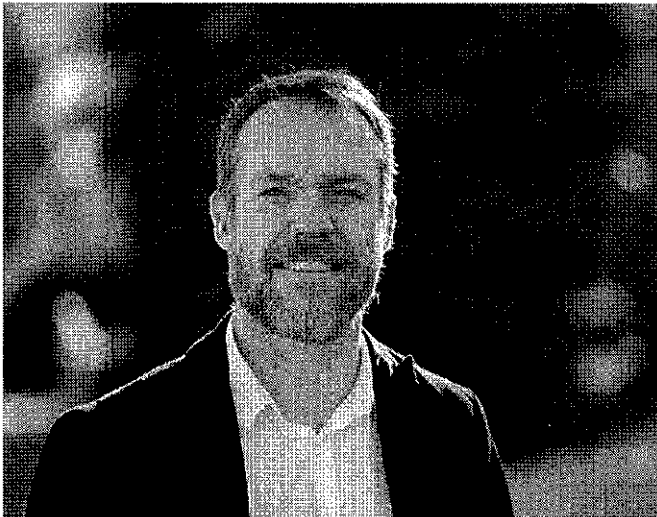
SERVICES
Schematic Design
Site Analysis
Entry Plaza
Design Graphics
Construction Documents

STATUS
Completed

Design Team

DHM Design (DHM) will serve as the project prime. Our philosophy that built features should be in balance with a project's natural and cultural setting is grounded in the idea that Landscape Architecture can establish a connection between diverse site resources. Our firm has extensive experience in the planning and design of recreation facilities, parks and open spaces. Many of our projects involve water quality, restoration, and wetland protection and mitigation. We take a sensitive approach to the design of any man-made improvements that impact natural systems.

We have the capacity to devote the time, attention and qualified staff necessary to complete the Adams County Veteran's Memorial Concept Design project. With approximately 60 landscape architectural professionals supporting our team's efforts, we are very confident in our ability to produce documents and deliverables in a timely and efficient manner. If selected, DHM is available to immediately begin work on this project.



Mark Wilcox

Role: Principal-in-Charge | Primary Point-of-Contact | Project Manager

Mark Wilcox will be the Primary Point of Contact and Lead Designer for the project. Mark has been intimately involved in projects in the Adams County Community for over a decade.

Education

B of Landscape Architecture, Kansas State University, 1994

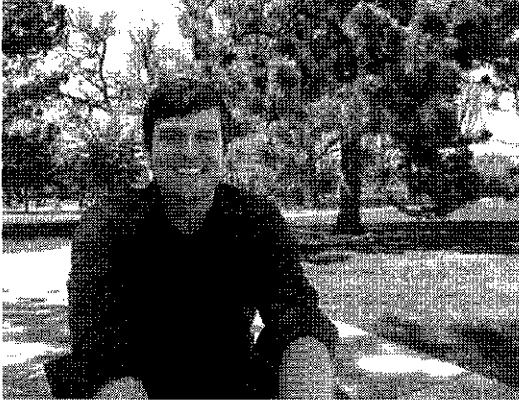
Registrations

Professional Landscape Architect: CO | ASLA

Mark's contributions to DHM showcase his diverse talents from; managing projects to creating beautiful colorful renderings, planning and designing parks, trails, and greenways, and understanding the technical aspects of implementing these designs. Mark is a leader in recreational planning and design with over 24 years of experience helping communities and government agencies develop effective and sustainable solutions deeply rooted in community participation. He has been involved in a variety of projects; planning and designing parks, trails, public facilities, athletic fields, streetscapes and community designs; resort master planning and development. His outstanding abilities have led to DHM's success with the award-winning Johnson Habitat Park.

Areas of Expertise

Site Selection
Sustainable Site Design
Recreation
Trails and Circulation
Accessibility
Visitor Experience



Eric Giberson

Role: Landscape Architect/Co-Project Manager

Eric has a passion for parks, trails and open spaces and has been an integral part of the 88th Avenue Open Space Project currently being designed.

Education

B. of Landscape Architecture, Clemson University, 2012

Registrations

Professional Landscape Architect: CO | LEED Green Associate

Eric moved to Denver to work in an area that values environmentally friendly design and is surrounded with inspiration. Eric enjoys all aspects of design, from public speaking to drafting support documents for community approval and brings a creative energy and hard work ethic to our team. Eric's primary focus at DHM has been on public parks, trails and open space. When he is not creating outdoor spaces, he often is using them, whether it is hiking in the mountains, playing basketball in the park, or throwing the frisbee with friends.

Areas of Expertise

Recreation Design and Planning
Community Planning
Graphic Communication
Public Process
NEPA Process



Kaitlin Baker-Carr

Role: Designer

Kaitlin will assist in the production of master planning documents and public process.

Education

B. of Landscape Architecture, Colorado State University, 2018

Kaitlin joined DHM Design in June of 2018 with a Bachelor's Degree in Landscape Architecture from Colorado State University. She has a passion for landscapes that create a connection between people and the nature around them through thoughtful design and aesthetic. Having grown up in Colorado, she understands the significance of the American West and strives to reflect that in her work. In her free time, she enjoys taking her dog Bosko on outdoor adventures and spending time with her family and friends.

Areas of Expertise

Recreation Design and Planning
Community Planning
Graphic Communication
Public Process
NEPA Process

Proposed Scope of Services and Costs

Adams County Veterans Memorial Concept Design Project Proposed Scope of Services and Costs

DHM Design	Mark Wilcox Principal	3D Visualization Designer	Project Manager/ Sr Designer	Designer		
Hourly Rates	\$165	\$100	\$95	\$80	Total Hours	Sub Total Fee
Phase 1 Programming Analysis and Site Feasibility Study - 6 weeks						
Conduct project kickoff meeting with Adams County Parks staff for discussions concerning project design development, phasing, scheduling and public outreach process. Consultant shall provide a project schedule with key milestones and submittals. Prepare final work plan based on conversations with County and Project Team.	4		4		8	\$1,040.00
Develop Work Plan/ Project Permitting and Approval Plan	2				2	\$330.00
Data Collection, Memorial Tours, & Review Existing Information	5		5		10	\$1,300.00
Site Review/Programming Analysis/Site Inventory Analysis	4		14	20	38	\$3,590.00
Character Image Board to Review Programming Opportunities	1		6	12	19	\$1,695.00
Feasibility Report	2		4		6	\$710.00
Meetings with County and Project Management Team (2)	6				6	\$990.00
Phase 2 Conceptual Design Process - 4 Weeks Alternate Development/ 4 Weeks Final Concept						
Participation in Approval and Permitting Process	2		4	6	12	\$1,190.00
Collaboration with Artist	1		4		5	\$545.00
Draft Concept Alternates (2 to 3 alternates)	8		24	54	86	\$7,920.00
Preferred Concept Design	2		12	24	38	\$3,390.00
Preliminary Cost Estimate	1		4	8	13	\$1,185.00
Final Concept Design Report	1		4		5	\$545.00
3D Model of Memorial and Photo Simulations	1	30			31	\$3,165.00
Meetings with County and Project Management Team (4)	12				12	\$1,980.00
Subtotal:	52	30	85	124	291	\$29,575.00
Travel/ Printing Expenses and Reimbursables						\$1,000.00
Total					291	\$30,575.00

DHM Design Hourly Rates

DHM DESIGN

LANDSCAPE ARCHITECTURE | LAND PLANNING | ECOLOGICAL PLANNING | URBAN DESIGN

FEE STRUCTURE DHM Design Corporation Effective January 1, 2019

Hourly Rates

Principal Landscape Architect/Planner	\$130.00 - \$190.00
Principal Ecologist	\$150.00 - \$165.00
Associate Principal	\$120.00 - \$150.00
Senior Associate	\$110.00 - \$125.00
Associate	\$95.00 - \$115.00
Senior Designer/Planner	\$90.00 - \$105.00
Designer	\$80.00 - \$90.00
Natural Resources/GPS Technician	\$85.00 - \$120.00
Graphic Designer/Visualization	\$85.00 - \$110.00
Clerical/Word Processing	\$55.00 - \$65.00

Reimbursable Expenses

Xerox Copies	\$ 0.12 per copy
Color Copies	\$ 1.50 per copy
In-House Computer Plots	
- Mylar	\$ 3.50 per square foot
- Vellum	\$ 2.30 per square foot
- Bond	\$ 0.45 per square foot
Color Computer Plots	\$ 2.80 per square foot
Mileage	\$0.58 per mile

All outside reimbursable expenses such as printing, copying, postage and deliveries are billed at our direct costs.

All sub-consultants will be billed at our direct cost plus 4% administrative charge.

Bills are rendered and due payable monthly. Terms: Due and payable within 45 days upon receipt of statements. 1.5% per month interest charged on all past due accounts.

Proposal price quotes shall remain in effect for a period of six months with renegotiation of hourly rates and reimbursable expenses at that time.

DENVER CARBONDALE DURANGO BOZEMAN

WWW.DHMDESIGN.COM

900 South Broadway, Suite 300 Denver, CO 80209 P: 303.892.5566 F: 303.892.4984



DHM DESIGN

DENVER • CARBONDALE • DURANGO • BOZEMAN

900 South Broadway, Suite 300 | Denver, Colorado 80209
tel: 303.892.5566 | www.dhmdesign.com

LET ME NOT MOURN FOR THE MEN WHO
WENT OFF FIGHTING BUT RATHER LET ME
BE GLAD THAT SUCH HEROES HAVE LIVED